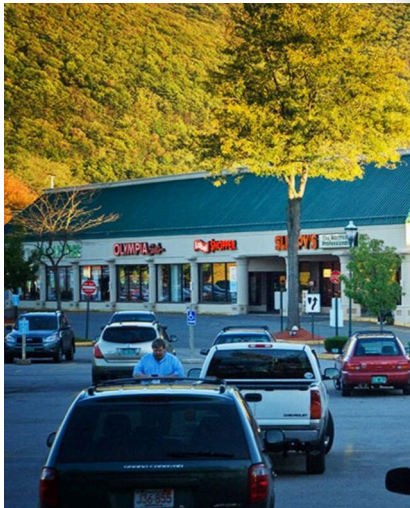




768 PUTNEY ROAD (RT 5)  
BRATTLEBORO, VT

# ROYAL SQUARE SHOPPING CENTER



ALDI, INC.

MATTRESS FIRM

PLANET FITNESS

HUCK FINN - LABEL SHOPPER

PANASIAN ONE

# ROYAL SQUARE SHOPPING CENTER

768 PUTNEY ROAD (RT 5)  
BRATTLEBORO, VT

## A Retail Hub



Royal Square is a highly trafficked, 108,000 square foot shopping center featuring ALDI, Staples, Planet Fitness, and Mattress Firm. The center bustles because this excellent mix of stores meets the daily needs of today's busy consumer.

## Location



The center is just off Exit 3 of I-91 and neighbored by Hannaford, Rite Aid, McDonald's, Wendy's, Advanced Auto, and Family Dollar. The center boasts a signalized entrance and plentiful parking.

## Trade Area



Brattleboro is a regional draw for shopping and services to all the surrounding southeastern Vermont towns.

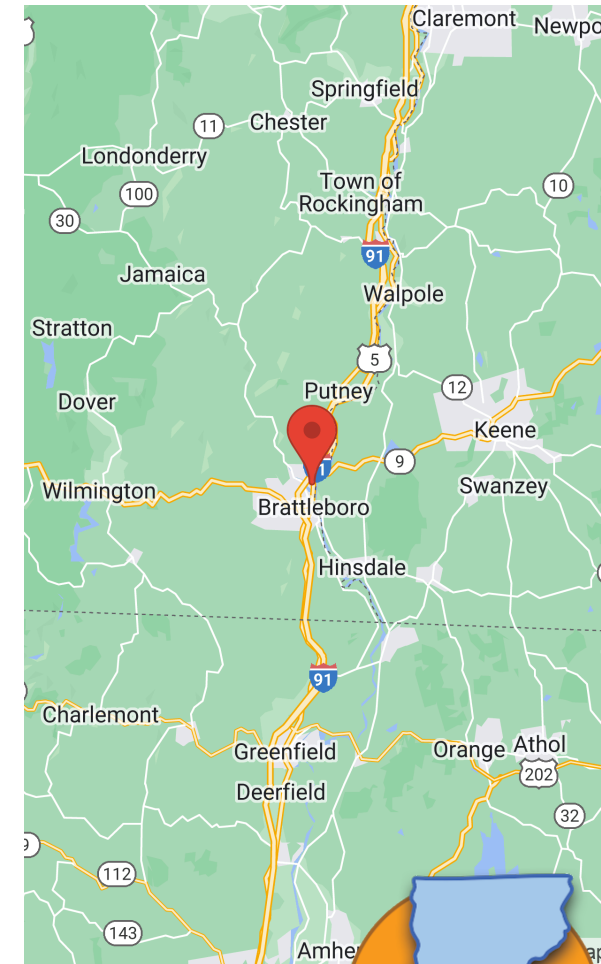
ALDI, INC.

MATTRESS FIRM

PLANET FITNESS

HUCK FINN - LABEL SHOPPER

PANASIAN ONE



# ROYAL SQUARE SHOPPING CENTER

768 PUTNEY ROAD (RT 5)  
BRATTLEBORO, VT

ALDI, INC.

MATTRESS FIRM

PLANET FITNESS

HUCK FINN - LABEL SHOPPER

PANASIAN ONE

	5 miles	10 miles	15 miles
POPULATION	0	0	0
DAYTIME POPULATION	17,171	33,765	72,375
AVERAGE INCOME	67,576	77,910	80,518
MEDIAN AGE	46	45	44

Site Reports USA 2021



# ROYAL SQUARE SHOPPING CENTER

768 PUTNEY ROAD (RT 5)  
BRATTLEBORO, VT

ALDI, INC.

MATTRESS FIRM

PLANET FITNESS

HUCK FINN - LABEL SHOPPER

PANASIAN ONE

## About Wilder



Wilder is a Boston-based real estate development, management, and leasing firm specializing in the positioning of retail properties. Privately held and owner managed, Wilder's mission has been and continues to be to create vibrant shopping places that meet and exceed the expectations of our customers, retailers, and investors.

From lifestyle centers, urban properties, and community centers to mixed-use developments and super-regional malls, Wilder, in its 40-year history, has developed, managed, and leased over 20 million square feet of retail properties throughout the United States and Puerto Rico.

The company continues to have a diverse portfolio of properties throughout the East Coast.

## For More Information



Ryan Feinberg, Vice President  
[rfeinberg@wilderco.com](mailto:rfeinberg@wilderco.com)  
954-614-5516

