



# MERRIMAC PLAZA

180 Haverhill Street  
Methuen, MA 01844

MARKET BASKET • WALGREENS • MCDONALD'S





## MERRIMAC PLAZA

180 Haverhill Street  
Methuen, MA 01844

MARKET BASKET • WALGREENS  
MCDONALD'S

Merrimac Plaza is a highly trafficked, 180,000 square foot shopping center featuring Market Basket, Dots, Dollar Tree, Walgreens, McDonald's, Bank of America, and small shop office space.

### LOCATION

Haverhill Street on Route 110, one-half mile from I-93, is a major thoroughfare of commercial businesses and retail shopping in the Merrimack Valley.

### TRADE AREA

This popular neighborhood center serves the dense residential population as well as being a very convenient stop for the large population of area workers.

### AVERAGE DAILY TRAFFIC

**Haverhill Street (Route 110)  
at Elm Street:** 18,000 vehicles  
per day

(2020 SitesUSA)

## MERRIMAC PLAZA

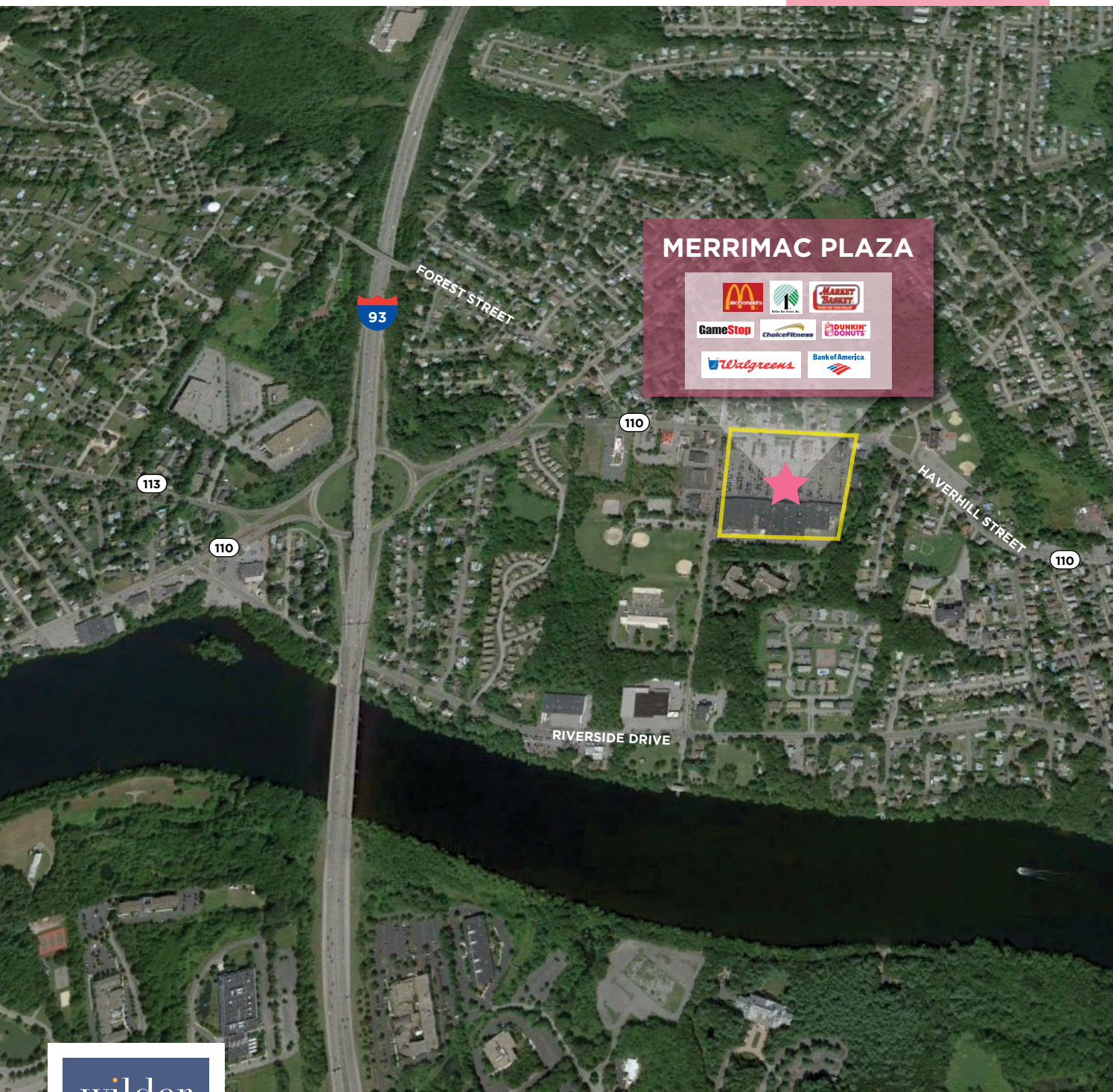
180 Haverhill Street  
Methuen, MA 01844

MARKET BASKET • WALGREENS  
MCDONALD'S

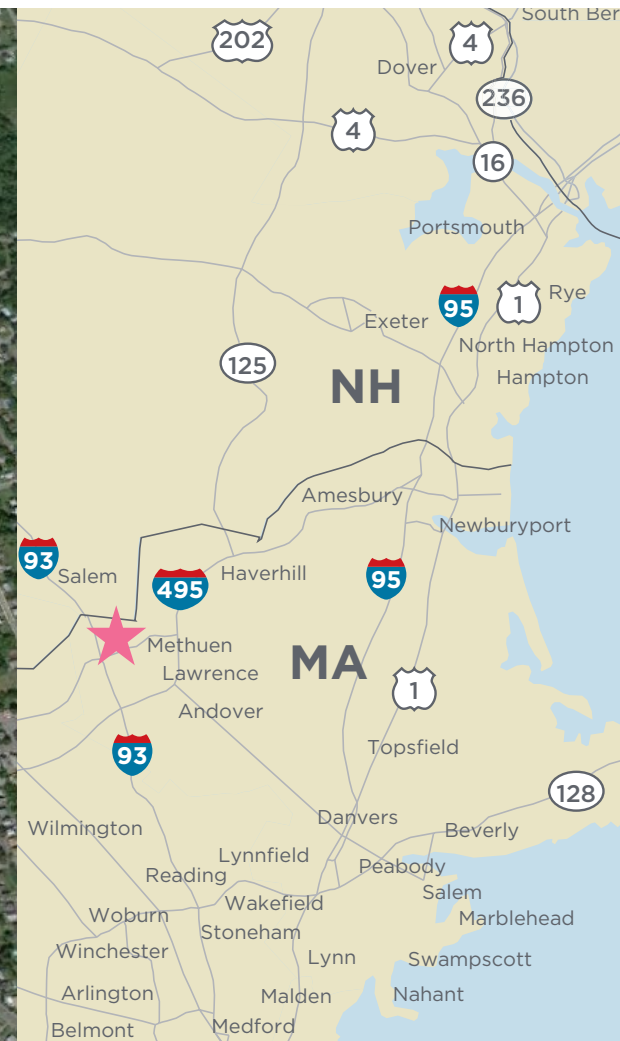
## 2020 ESTIMATES

	3 MILES	5 MILES	15 MIN DRIVE
<b>Population</b>	119,850	194,445	200,346
<b>Average HH Income</b>	\$77,384	\$100,357	\$98,795
<b>Median Age</b>	35 yrs	37 yrs	37 yrs
<b>Workplace Population</b>	58,555	93,575	113,347

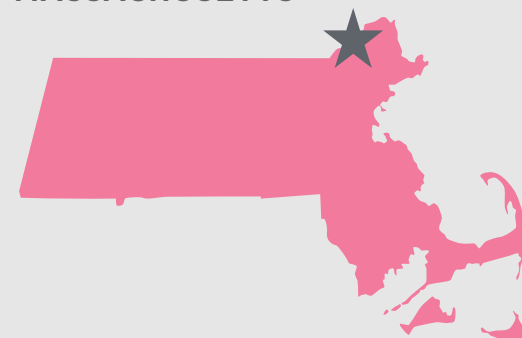
(2020 SitesUSA)



## MERRIMAC PLAZA



## MASSACHUSETTS







## MERRIMAC PLAZA

180 Haverhill Street  
Methuen, MA 01844

MARKET BASKET • WALGREENS  
MCDONALD'S

### ABOUT WILDER

Wilder is a Boston-based real estate development, management, and leasing firm specializing in the positioning of retail properties. Privately held and owner managed, Wilder's mission has been and continues to be to create vibrant shopping places that meet and exceed the expectations of our customers, retailers, and investors.

From lifestyle centers, urban properties, and community centers to mixed-use developments and super-regional malls, Wilder, in its 40-year history, has developed, managed, and leased over 20 million square feet of retail properties throughout the United States and Puerto Rico.

The company continues to have a diverse portfolio of properties throughout the East Coast.

### FOR MORE INFORMATION

#### Vivian Grossman

[vgrossman@wilderco.com](mailto:vgrossman@wilderco.com)  
617.896.4913

#### WILDER

800 Boylston Street, Suite 1300  
Boston, MA 02199  
617.247.9200

[www.wilderco.com](http://www.wilderco.com)  
[info@wilderco.com](mailto:info@wilderco.com)

